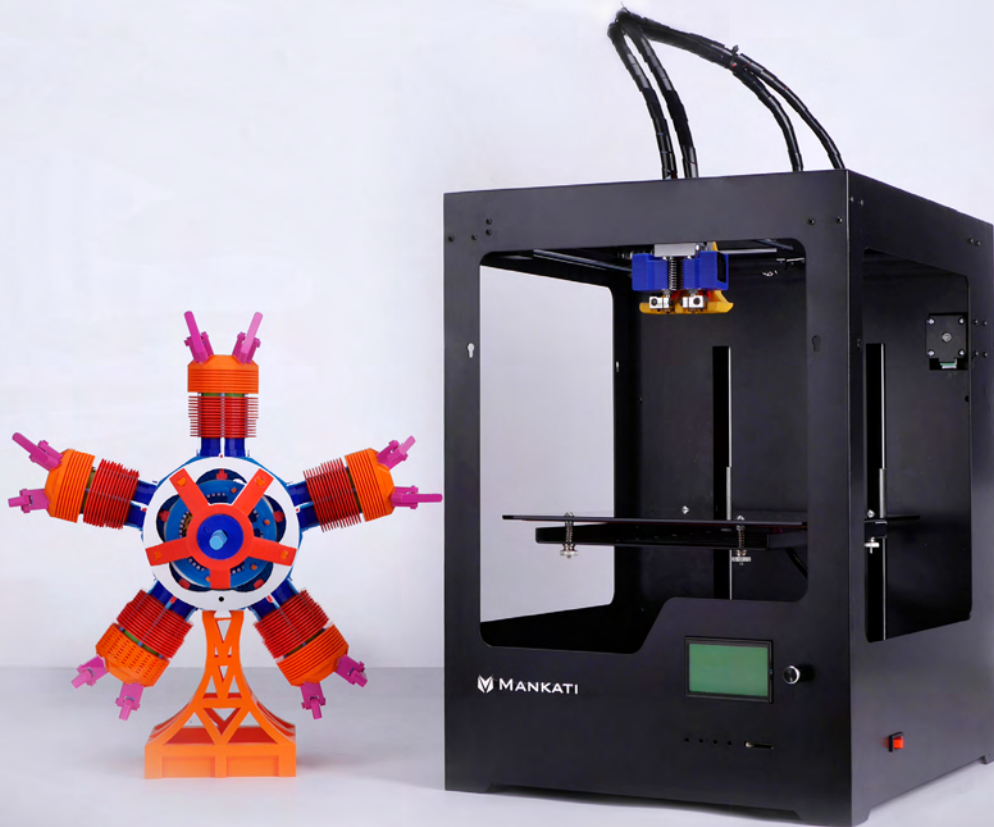


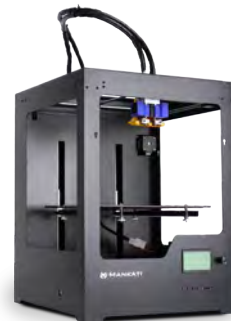
A thrilling reform to the next level

Mankati Fullscale XT **Plus**



Mankati

Fullscale XT Plus



Model

Fullscale XT Plus

Forming Tech.	Fused Deposition Modeling (FDM)
Extruder	High Temperature All Metal Extruder * 2
Build Size	260*260*300 mm / 10.2*10.2*11.8 inch

Specification

Precision	X,Y axis 0.01 mm, Z axis 0.015 mm
Layer Resolution	0.02~0.4 mm
Nozzle Diameter	0.4 mm
Max. Travel Speed	250 mm/s
Max. Print Speed	180 mm/s
Max. Extruder Temperature	300 °C / 572 °F
Max. Hot Bed Temperature	110 °C / 230 °F
Max. Extrude Speed	100 mm/s

Filament

Filament Type	ABS, PLA, PVA, PS
Filament Diameter	3 mm
Filament Temperature	150~300 °C / 302~572 °F
Filament Colors	Multicolor

Hardware

Controller	Arduino ATmega 2560 R3 Micro Controller
Mother Board	Mankati Stable Main Board V1.0
Stepper Motor	X, Y axis 42*48, 1.3 A; Z axis 42*40, 1.3 A
Geared Motor	E42*40, Ratio 1:10
Power Input	100~230 V, 1.5 A
Power Output	24 V, 15 A

Software

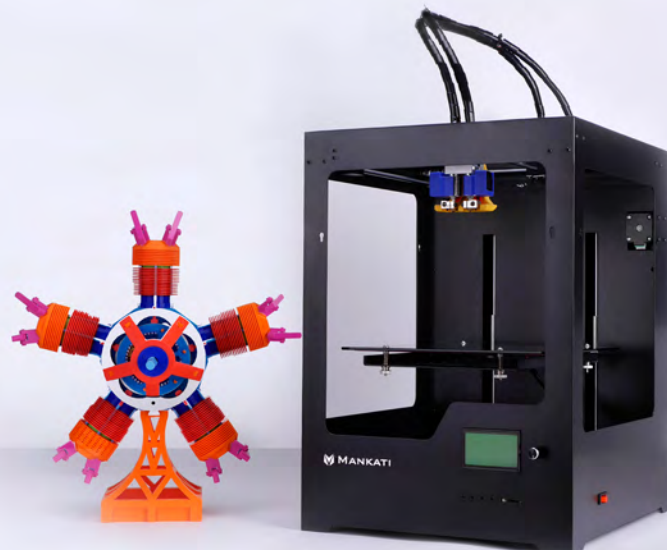
Operating System	Windows XP/Vista/7/8, Mac OS, Ubuntu
File Format	STL, OBJ, GCode
Printing Software and Slicer	MankatiUM V6.2
Software Language	English, Deutsch, French, Dutch, Spanish, Polish

Machinery

Dimensions	384*434*535 mm
Gross Weight	46 kg

Fullscale XT Plus

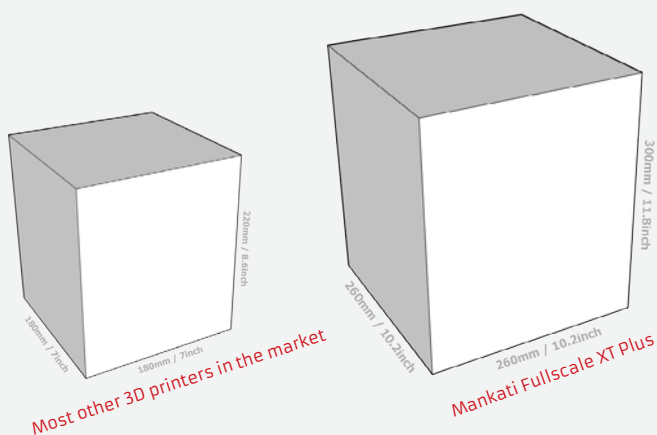
An amazing tool for designers, makers and engineers. With high resolution and user friendly functions, it is the right choice for you.



Print Bigger Now

260*260*300 mm / 10.2*10.2*11.8 inch

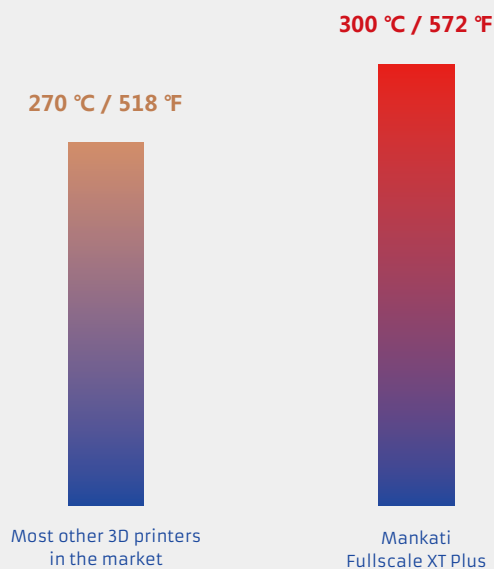
Print volume of Fullscale XT Plus
is much bigger than
most other 3D printers in the market.
Bigger volume for bigger ideas!

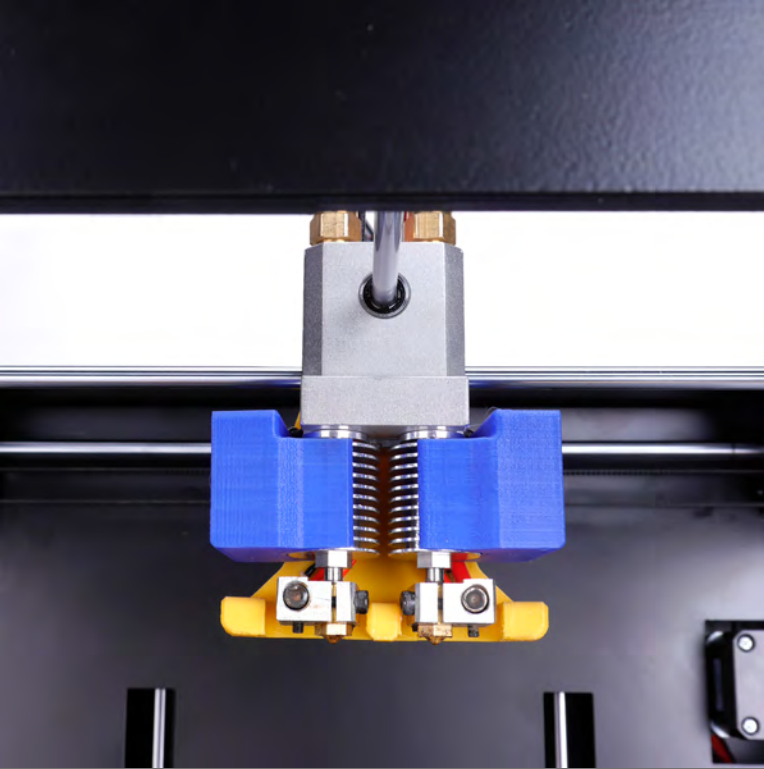


Print with More Possibilities

Nozzle Temperature up to 300 °C / 572 °F

High temperature nozzle means
more filament choices,
more applications for 3D printing,
and more fun!





HITP Dual Metal Extruders

High Temperature up to 300 °C / 572 °F

Dual Extruders

Easy Maintenance

High Resolution Performance

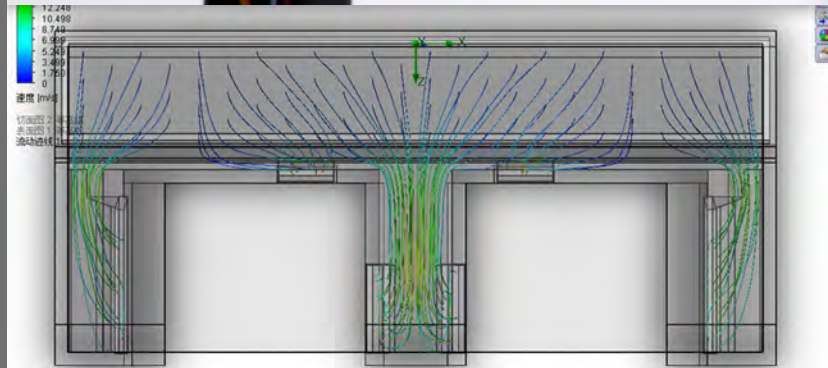
Efficient Cooling System

A Cooling Fan for Each Extruder

A Turbo Fan for Printing Area

High Efficient Fan Drift

Perfect Cooling Performance



Stable & High Resolution Performance

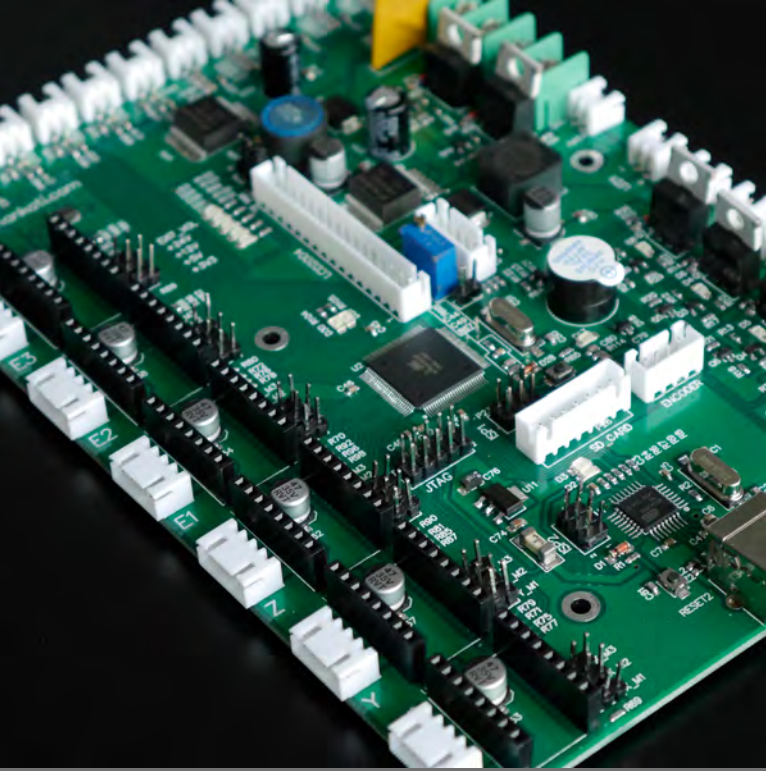
Optimized Structure

Smooth Hot End

High Performance Nozzle

Accurate Temperature Control

Easy to be Disassembled and Installed

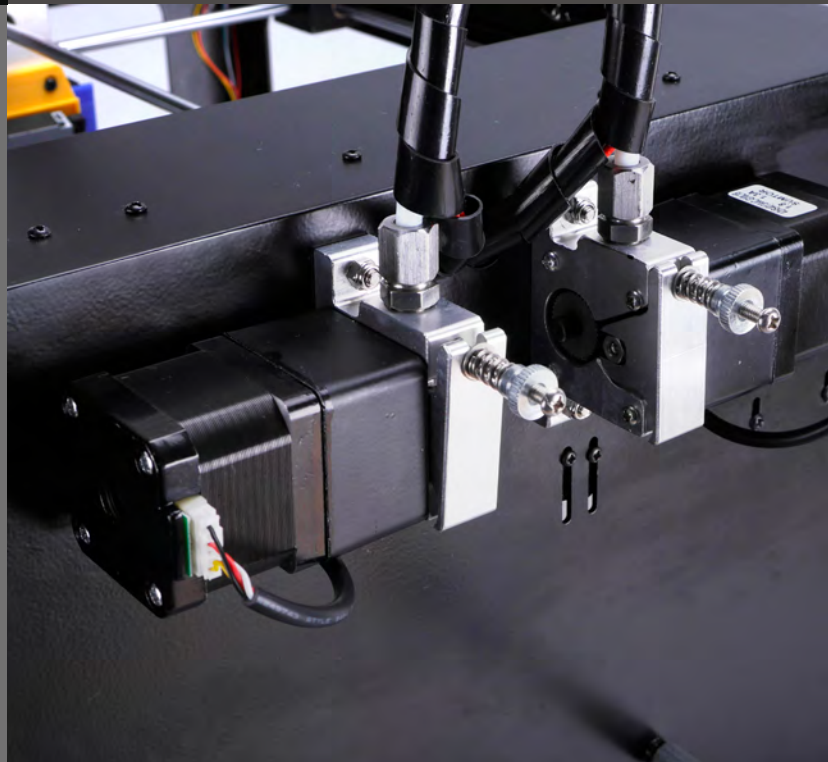


Stable Main Board

Over 20 Optimizations
Stable Performance

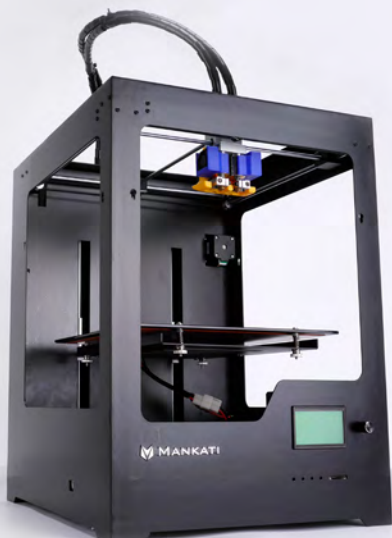
Accurate Feeder

All Metal Gear Motors
Stable Filament Fixture



High Performance Build Plate

Temperature up to 110 °C / 230 °F
Short Heating Time
Accurate Temperature Control



Printing Performance

Bird Feeder



Smooth Surface

Smooth and stable filament extrude performance.

Details Show Everything

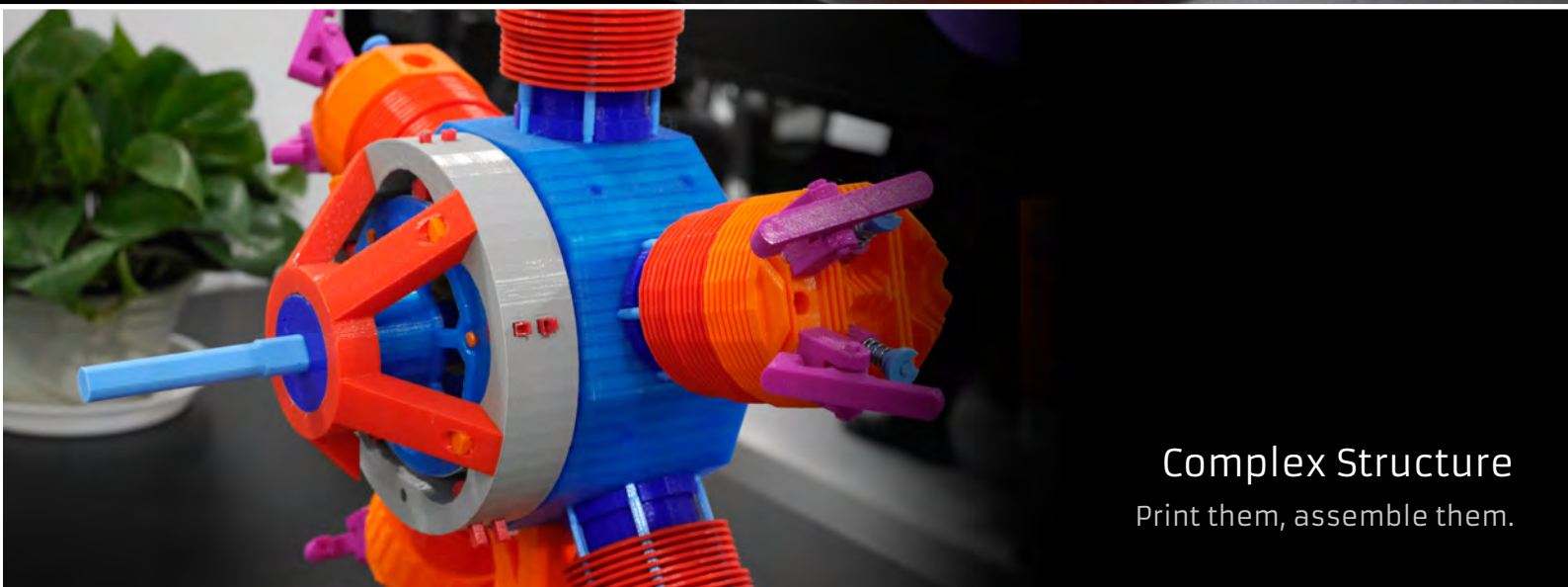
A zoom-in view of the surface.





Printing Performance

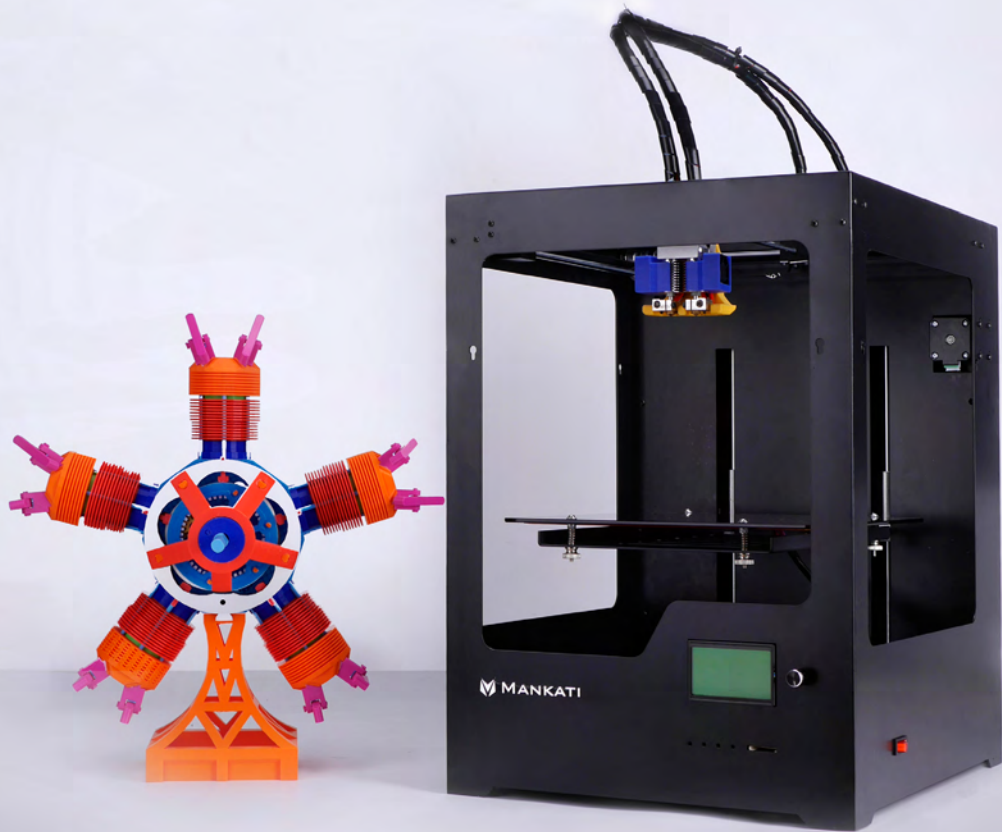
Radial Engine



Complex Structure
Print them, assemble them.



Easy to Assemble



Email: sales@mankati.com
Skype ID: sales_mankati
Tel: +8621 6761 8178